



SIXPENNY

Nursery & Pre-school

Sixpenny Devizes is on the move...

In January 2012, Sixpenny will be moving to a brand new, purpose-built day nursery and pre-school. We're very excited about it and hope you will be too!



info@sixpenny-childcare.co.uk
www.sixpenny-childcare.co.uk



Welcome to the new Sixpenny Devizes

Whenever we've asked parents 'What are the most important features you think a nursery should have?', three essentials kept coming up.

- A safe, secure garden.
- A rural environment.
- Plenty of off-road parking.

And that's just what Sixpenny Devizes is going to have, because we're going to build our very own, purpose-built day nursery and pre-school. We've been granted full planning permission, and work will start in August with completion in early January 2012.



Our own wood for children to explore

The new nursery – everything you've always wanted for your child

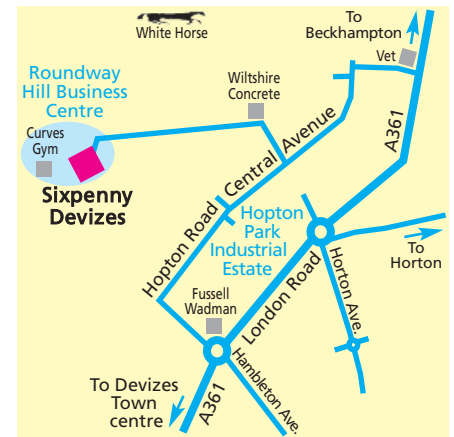
The new Sixpenny will be built to our own design, so will have everything you would expect your child to have at nursery.

- A secure enclosed garden, laid to grass with an outdoor play/classroom area, with pony paddocks – and ponies – close by.
- Its very own woodland area where children will be able to build dens, look for wildlife, play hide and seek among the trees and generally enjoy themselves in a safe, supervised environment.
- Double doors opening from every classroom onto a covered walkway, and then onto the garden for plenty of fresh air and outdoor learning.
- Disabled access throughout with completely flat flooring and wide doorways.
- Lots of free off-road parking and, best of all, no traffic wardens.

The new nursery will include everything we adored about Nursteed, and more. Above all, it will have the same family feel, with the same staff, and be homely and comfortable for the children whatever their age.

Where the new Sixpenny will be

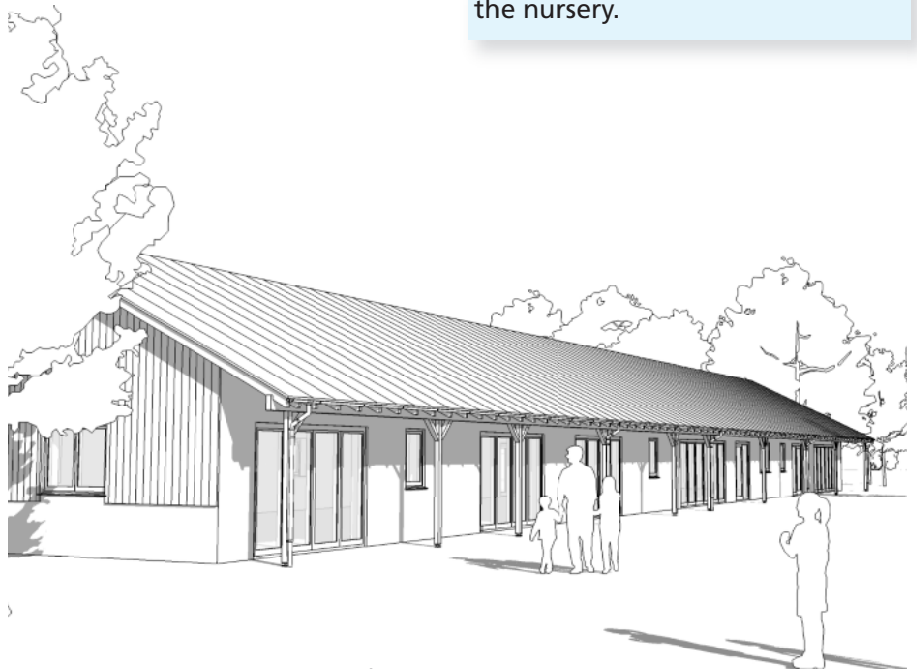
The nursery is on farmland to the north of Hopton Park Industrial Estate at the Roundway Hill Business Centre, overlooked by the Devizes White Horse.



Close to Curves Gym on the Roundway Hill Business Centre, the new nursery is easily accessible from all directions.

Keeping you informed

From the beginning we want you to know what's happening, right up to the moment the new Sixpenny Devizes welcomes you in January 2012. Keep an eye on the displays and noticeboards at Nursteed over the next few months, and look out for our regular Newsletter; all will be packed with information and keep you fully up to date. Nearer the time we'll be inviting everyone to an Open Evening, where you'll be able to have a sneak preview of the nursery.



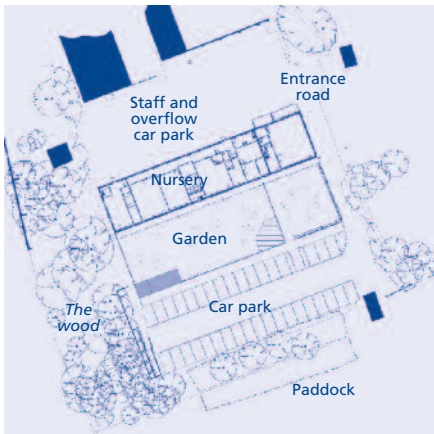
Architect's drawing – exterior view from the west



Architect's drawing – interior view

The Nursery

The building follows the Sixpenny tradition by resembling a single-storey barn, set in glorious countryside and with its own large secure garden. A covered walkway runs the length of the building, and each classroom has patio doors opening on to the walkway, which leads onto the enclosed garden.



Architect's site plan

Classrooms

There will be four classrooms, separate but linked.

- Two baby rooms, one for babies aged 0-1 year and one for babies aged 1-2 years. The rooms have a dedicated milk/snack kitchen, dedicated sleep room and nappy change facilities.
- A classroom for children aged 2-3 – our early risers – with their own quiet/sleep room.
- A classroom for pre-school children aged 3-5 years, with an IT section, and a Literacy, Numeracy and Science area.

The 2-3 year and pre-school classrooms are linked by their own bathrooms which have low-level toilets specially designed for children. There is also a snack area with low-level sink and counters, where children will be able to prepare their own drinks and snacks.

All rooms are connected, and siblings will be able to play together for that all-important family feel. The rooms can also be divided off so the child's own needs can be met in their own safe and comfortable room.

Thank you...

We are extremely grateful to David and Tishi Scott for their unstinting support of the nursery, and for sharing their gorgeous garden with us. We must have been a bit of an intrusion sometimes, and now it's time to hand the building back to the Scotts so they can enjoy their wonderful surroundings in peace.

Sensory Room

The Sensory Room is a special quiet area, with a range of stimulating and interactive equipment to help your child's sensory development. While providing great fun and enjoyment, a Sensory Room supports development of the child's communication, social and emotional skills, and improves concentration and general awareness.



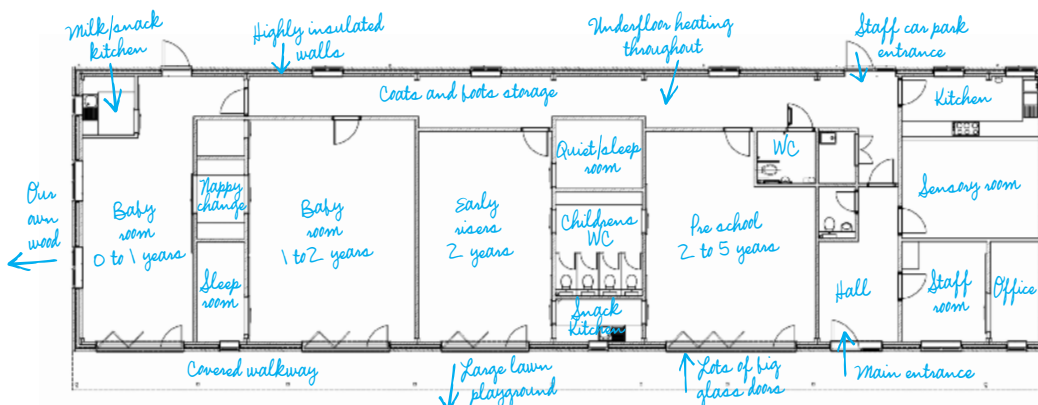
Environmental and eco-friendly

We've tried to make the nursery as eco- and environmentally-friendly as possible by installing

- solar panels for heating water
- air source heat pumps for electricity
- under floor heating with each room separately regulated
- pollen-free ventilation throughout for controlled temperatures and fresh air
- highly insulated walls for a constant temperature in winter and summer
- lots of windows and patio doors for fresh air and natural light.



Architect's plan view of nursery



Message from Kate

This is a big step for Sixpenny, but one I've always dreamed of taking. I want the new nursery to be a special place where children can play and learn in wonderful surroundings. I hope you and your child will come with us on this exciting journey, and help us make Sixpenny Devizes your special place too.



Kate with two nursery school children

Kate

*Kate Easter
Proprietor*

Frequently Asked Questions

We know you'll have lots of questions, so we've tried to anticipate a few of them and give you the answers now.

Q Why are you moving from Nursteed?

A We wanted to offer more opportunities for outside play and learning, and to improve access for parents dropping off, picking up and visiting. We've loved being at Nursteed and are very grateful to David and Tishi Scott for their immense support over the years; but they would now like to enjoy their glorious garden in peace, and we would like to offer more facilities.

Q When will the new school open?

A January 2012.

Q What happens if it's delayed?

A David and Tishi Scott have kindly agreed that we can stay on at Nursteed if the building is delayed. So whatever happens, we will have a school in 2012!

Q Will you have the same staff?

A All our staff, as well as our equipment, furniture and toys, will be coming with us. All members of staff are busy looking at what new equipment and additional staffing we might need for the new premises.

Q Will the fees increase?

A No. We intend to maintain the same fees at the new nursery.

Q Will you open on the same basis – half day, full day, term only?

A Yes, all the options available at Nursteed will be offered at the new Sixpenny nursery.

Q Will it be much bigger with more children?

A There will be 60 children in all – 24 babies, 16 early risers (2-3 years) and 20 pre-school. There will be a few more children than at Nursteed, but the building is bigger so each child will have more space, both inside and out. The staff: child ratio will be the same, and we'll be able to better cater for individual needs because we'll have more dedicated rooms. For example, we'll have two baby rooms, one for 0-1years, and one for 1-2years, so different ages and stages can be accommodated.

As our journey progresses, there'll no doubt be more questions, and please don't hold back – we really want to know what you think, so email us with all your comments, questions and feedback. We might not have all the answers now, but as we find them – so will you!



SIXPENNY
Nursery & Pre-school

Sixpenny Childcare

Head office: Kennet Barns, Church Lane, Mildenhall, Nr Marlborough, Wiltshire SN8 2LU

Telephone: 01672 515763

e-mail: info@sixpenny-childcare.co.uk

www.sixpenny-childcare.co.uk



Horses can often be seen in the paddock next door